

# ExG-32 KIT

EEGDigiTrack - the best solution for distributors

Modern **EEG headbox ExG-32**



22 EEG reference channels

10 bipolar channels

Damage-resistant construction

Possibility to connect photic stimulator, photo detector and patient button

Wireless and USB connectivity

SpO2 pulse oximeter input

Signaling of channel impedance on the housing

## 5 Reasons to choose EEGDigiTrack!

- 1.** THE MOST USER-FRIENDLY EEG SOLUTION
- 2.** INNOVATIVE AND CONSTANTLY DEVELOPED SYSTEM
- 3.** RELIABLE AND INTUITIVE
- 4.** POLISH PRODUCT
- 5.** EFFICIENT AND FAST SERVICE, ALSO REMOTE

# ExG-32 KIT

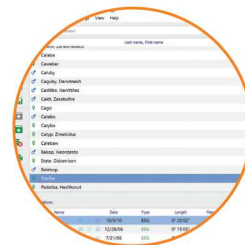


ExG-32 headbox

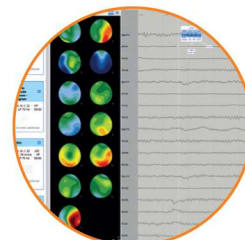


Photic stimulator

Tripods and holders (additional option)



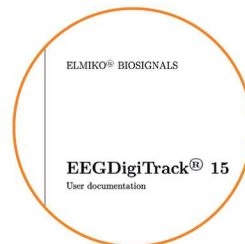
Database



EEGDigiTrack software



Dongle license



User manual

## Components of the EEGDigiTrack ExG-32 KIT:

- 33-channel ExG-32 headbox
- recording and analysis software with database
- dongle license
- photic stimulator
- user manual
- extension with the module: Video, PSG, Holter, VEP
- additional accessories: electrodes, EEG caps, conductive pastes and gels, holders for headbox or photic stimulator

## Highlights of EEGDigiTrack:

- multi-station work on a distributed basis
- user friendly and convenient interface
- convenient and very extensive measuring ruler
- adjustable workplace
- analysis: FFT, mapping, TPM, DSA/CSA, BSI
- meets the requirements of the GDPR
- continuous development of the software, including comments and suggestions from users
- backward compatibility with previous versions of the ELMIKO systems

Some graphics presented in this document are only a template and can look different from products currently available. EEGDigiTrack products are medical devices, CE and ISO 13485 certified by:



# EEGDigiTrack simplEEG\_42

Single-station desktop 42 channel EEG DigiTrack simplEEG device for routine clinical examinations



## Device features:

- ⇒ EEG amplifier [42 channels]
- ⇒ TCP/IP protocol interface
- ⇒ High-End PC station
- ⇒ Color monitor LCD
- ⇒ Laser printer
- ⇒ Uninterruptible Power Supplier
- ⇒ Computer-controlled photostimulator. It could be customized by the User (it is possible to enter any number of photostimulation sequences that enable to set up the flash frequency, the duration of the flash and the duration of the pause between the flash series)
- ⇒ EEG DigiTrack software with following functions: recording, viewing and analysis of the EEG. It enables panning viewing and the change of the scale of the EEG fragments. There are many other functions, for example the spectral analysis of any fragment of the EEG
- ⇒ Patient Database software enables patient registration, examination management and creating statistics,
- ⇒ Accessories: trolley with surge protector, set of cable, stands, photostimulator holders and head holders
- ⇒ EEG cap, set of electrodes with cables
- ⇒ User manual

REFERENCE No.: ELM-DTS42

## additional options:

- ⇒ Additional EEG analysis station [page 17]
- ⇒ Additional EEG analysis software [page 18]
- ⇒ Polysomnography module [page 20]
- ⇒ Video-EEG module [page 21]
- ⇒ VEP module [page 22]
- ⇒ 3-D mapping [page 23]
- ⇒ TPM mapping [page 24]
- ⇒ EEG Biofeedback [page 25-34]
- ⇒ EEG CCFM [aEEG] trend analysis module [page 39]
- ⇒ EEG holster [page 40, 41]
- ⇒ EEG accessories [page 42]